

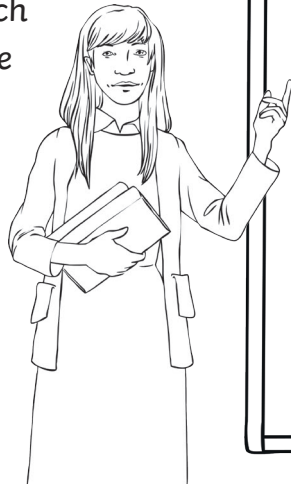


Adding and Subtracting Fractions

I can add and subtract fractions with denominators that are multiples of the same number.



Choose two of the fractions which have denominators that are multiples of the same number. Arrange them into a fraction addition or subtraction and calculate the answer.



$\frac{1}{2}$	$\frac{10}{12}$	$\frac{2}{16}$
$\frac{5}{8}$	$\frac{3}{4}$	$\frac{2}{3}$
$\frac{5}{6}$	$\frac{9}{10}$	$\frac{12}{15}$

My Addition Calculations	My Subtraction Calculations

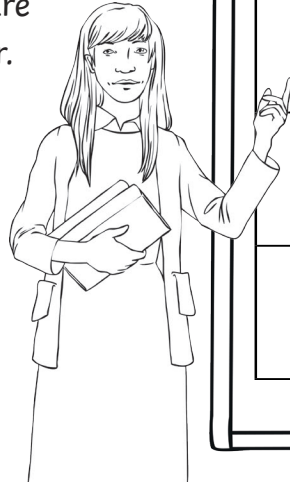


Adding and Subtracting Fractions

I can add and subtract fractions with denominators that are multiples of the same number.



Choose two of the fractions which have denominators that are multiples of the same number. Arrange them into a fraction addition or subtraction and calculate the answer.



$\frac{1}{2}$	$\frac{10}{12}$	$\frac{2}{16}$	$\frac{5}{9}$
$\frac{5}{8}$	$\frac{3}{4}$	$\frac{2}{3}$	$\frac{17}{20}$
$\frac{5}{6}$	$\frac{9}{10}$	$\frac{12}{15}$	$\frac{2}{5}$

My Addition Calculations	My Subtraction Calculations

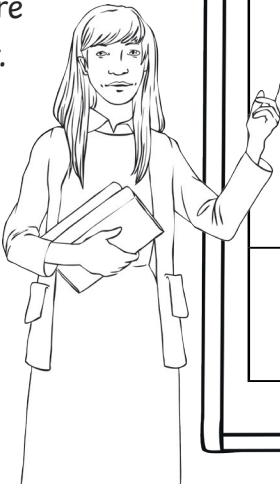


Adding and Subtracting Fractions

I can add and subtract fractions with denominators that are multiples of the same number.



Choose two of the fractions which have denominators that are multiples of the same number. Arrange them into a fraction addition or subtraction and calculate the answer.



$\frac{5}{2}$	$1\frac{5}{12}$	$\frac{20}{16}$	$1\frac{5}{9}$
$1\frac{5}{8}$	$\frac{7}{3}$	$2\frac{3}{4}$	$1\frac{3}{20}$
$\frac{10}{6}$	$1\frac{9}{10}$	$\frac{17}{15}$	$3\frac{2}{5}$

My Addition Calculations	My Subtraction Calculations



This is an open-ended task where there are many possible correct answers.



This is an open-ended task where there are many possible correct answers.



This is an open-ended task where there are many possible correct answers.